

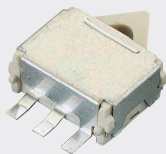
NDT601 Series

Recommend Applications

- Detection of media in portable equipment (MD, CD-ROM, DVD, DSC)
- Operation switches.

Features

- A compact and low-profile lever-type detector switch with withhigh reliability using sliding mechanical contacts.
- Long over-travel due to our own operating mechanism.
- Used as an operation switch.



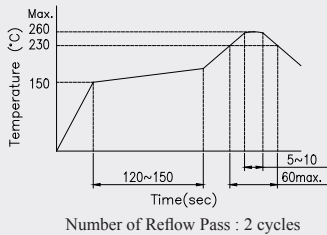
Rating (max)	DC6V 100mA
Contact Resistance	1Ω max.
Insulation Resistance	DC100V-100mΩ min.
Withstand Voltage	AC100V - 1 minute
Operating Force	100gf max.

Recommended Manual Soldering Profile

	Temperature	Time
Manual Soldering Temperature	360±10 °C	4-5 Sec.

The solder iron and solder shall be applied at a distance of 1.91 mm to 2.54 mm from the plastic housing.

Recommended Reflow Soldering Profile



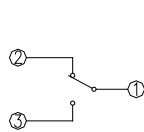
Durability	50,000 cycles.
------------	----------------

■ Lead Free ■ HF ■ RoHS

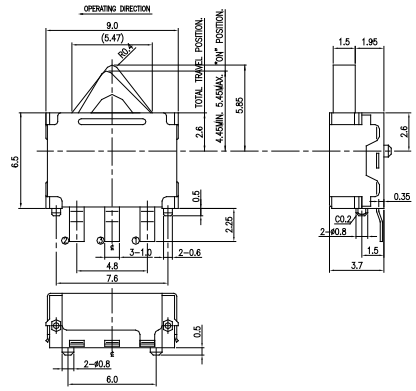
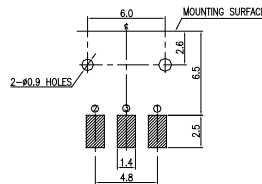
■ SMT - G Type Horizontal 9.0L x 9.75W x 3.7H ■ Outline Drawing

Product No.	Package
NDT601-G1A-AAAT	1,200 Pcs/Reel

Schematic



P.C.B Layout



General Tolerance : ±0.2mm