

Description **SGSC-SPT18A3.6-20F:**

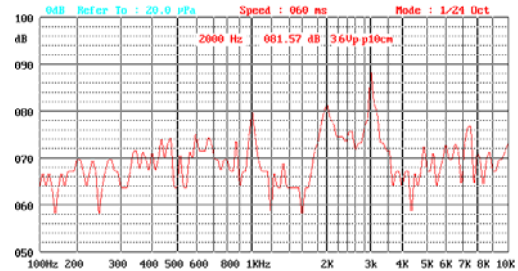
SMD Piezo Transducer 18mm length, type A(=7.7mm max. height),
3.6Vp-p rated voltage – 2.0KHz resonant frequency,
lead Free reflowing solderable and RoHS compliance

- RoHS compliance
- Reliable Solid State Piezoelectric Technology
- Corrosion Resistance Diaphragm
- Flame Retardant Plastic
- Tape and reel packaging for auto mounting

Picture



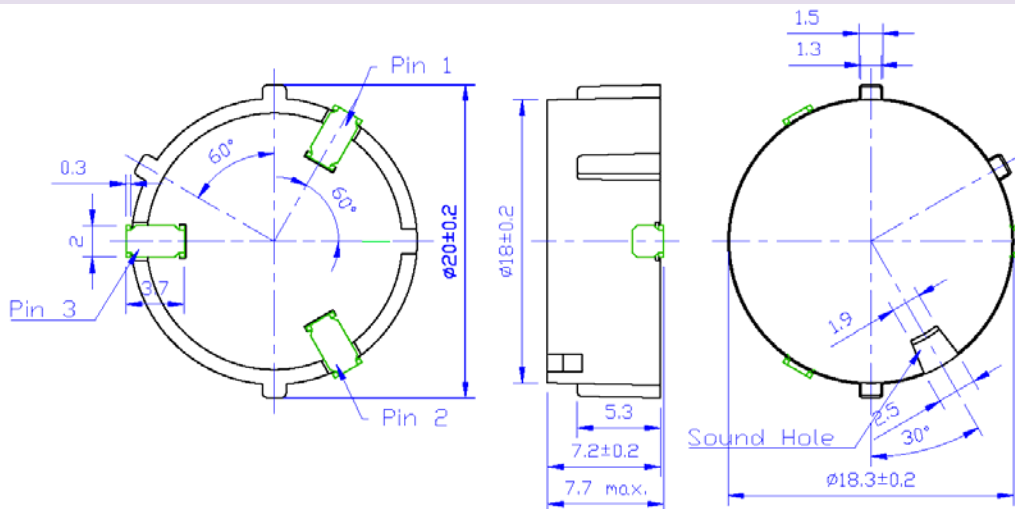
Frequency Response Curve



Specification

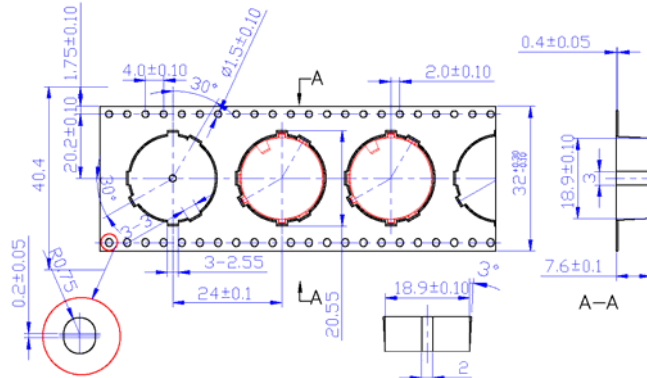
Operating Voltage	25 Vp-p max.
Operating Frequency	2,000+/-500Hz
Typical Sound Output	74~84dB min. at 3.6Vp-p 10cm 2.0KHz 25 °C
Rated Current	1mA at 3.6Vp-p 2.0KHz 25 °C.
Capacitance	20,000+/-30% pF at 100Hz 1Vrms
Operating Temperature	-30 °C to +85 °C
Storage Temperature	-40 °C to +90 °C without package
Termination	
Description	2 soldering pads, Sn plated Brass
Construction Materials	
Case	Plastic, LCP Vectra E130i
Diaphragm	Ni Alloy Disc N42
Weight (Typical)	2.0 g
Reliability	
*Life Test	At 12 Vp-p, 1 minutes ON 1 minutes OFF in room temperature continuously for 1,000 hours
*High Temperature	No function at +90+/-2 °C for 240 hours; Function at +85+/-2 °C for 240 hours
*Low Temperature	No function at -40+/-2 °C for 240 hours; Function at -30+/-2 °C for 240 hours
*Humidity	+40+/-2 °C, 95+/-5%RH, 240 hours
*Thermal Shock	-30+/-2 °C 0.5 hr +25+/-2 °C 0.25 hr +85+/-2 °C 0.5 hr +25+/-2 °C 0.25 hr.
*Vibration	Temperature Go up or Drop time is 0.5 hr. 3 hrs per 1 cycle. Total is 5 cycles
*Shock	1.5mm with 10 to 50Hz of vibration frequency to each of 3 perpendicular directions for 2 hours 980m/s2 (=100g) shock for each mutually perpendicular directions, half sine wave, 3 times each
*Drop Test	Dropped naturally from 750mm height onto the surface of 10mm wooden board. 2 directions – upper and side of the part are applied
*Soldering Heat Resistance	Samples put through reflowing soldering oven 2 twice
**Solderability	Samples put on PCB with solder paste through reflowing soldering oven 1 times
Warranty	For a period of one (1) year from date of manufacture under normal operations *All specifications must be satisfied after the test (Recovery:2 to 4 hrs of recovery under the standard condition after the removal from test chamber). **90% min. soldering pads shall be with solder.(except the edge of pad)

Dimensions (Unit: mm)



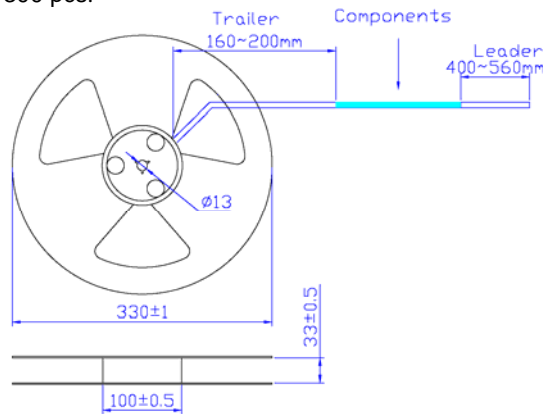


Tape & Reel Dimensions (Unit:mm)



NOTE:

1. 10 sprocket hole pitch cumulative tolerance +/-0.20mm.
2. Carrier camber not to exceed 1 mm in 250 mm.
3. All dimensions meet EIA-481-2-A requirements.
4. Thickness: 0.40+/-0.05 mm.
5. Component loaded per 13" reel: 300 pcs.



Recommend Reflowing Profile as per IPC/JEDEC J-STD-020D

